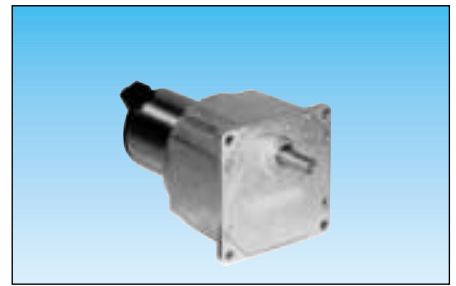


## D.C. geared motors

- High quality, all-metal integral-type gearboxes
- Basic speed range : 7.3 to 616 rpm
- Torque rating : 5 Nm, for long life
- Motors : maximum usable power 9 to 33 W



### Applications

- Motor-driven blinds and shutters
- Opening and closing doors
- Photocopiers : staplers, collators
- Equipment for medical rehabilitation
- X-ray equipment
- Agro-foodstuffs industry
- Motorised point-of-sale displays

### Types

		80 815 0	80 815 0	80 815 0
<b>Nominal voltage</b>		12 V	24 V	48 V
<b>Standard motor speed (rpm)</b>		2600	2600	2600
<b>Output speeds (rpm)</b>	Ratios (i)	<b>Part numbers</b>		
2600	1800			
616	426	●	●	●
385	266	●	●	●
339.5	235	●	●	●
212	147	●	●	●
170	118	●	●	●
106	73	●	●	●
68	47	●	●	●
53	37	●	●	●
42.5	29.4	●	●	●
21	14.7	●	●	●
10.5	7.4	●	●	●

**Standard gearbox shaft : see dimensions**

### General characteristics

		82 810 0	82 810 0	82 810 0
Motor		82 810 0	82 810 0	82 810 0
Gearbox		81 035 0	81 035 0	81 035 0
Maximum permitted torque on gearbox for continuous rating	N.m	5	5	5
Axial load (dynamic)	daN	6	6	6
Radial load (dynamic)	daN	6	6	6
Maximum usable power	W	10.3	9.5	9
Nominal usable power	W	9.4	8.7	8.2
Gearbox case temperature rise	°C	45	46	45
Weight	g	820	820	820

### Options : for standard products non stocked

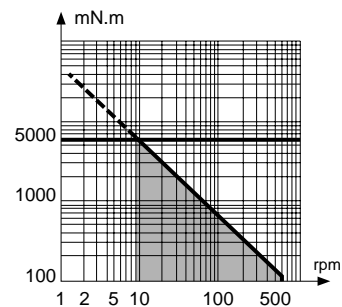
		●	●	●
Output shaft Ø 8 mm 79 290 064		●	●	●
Ball bearings on gearbox output shaft (81 035 5)		●	●	●

### Nominal speed and torque curves

The shaded zone represents the operating range of the geared motor.

The horizontal line marks the maximum torque available in continuous duty cycle for a given life.

For higher torque ratings, service life will be reduced.



### Made to order products, available on request

#### Motor :

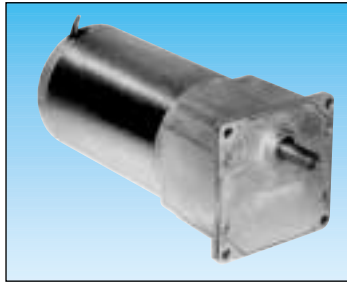
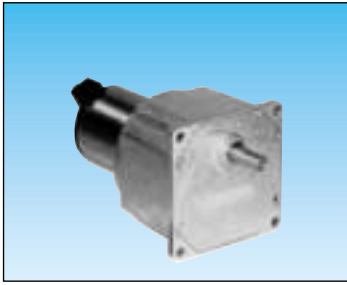
- other supply voltages
- shaft lengths at front and/or rear
- integrated interference suppression 82 830
- encoders
- other front and rear fixing plates
- "high power" motors

#### Gearboxes :

- special shaft
- special lubrication
- other reduction ratios

### Other information

For basic principles see pages 1/7.

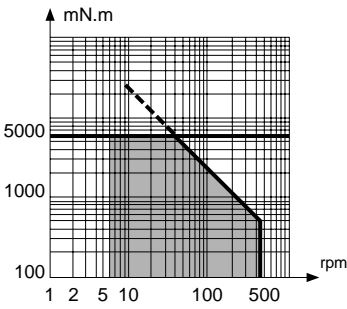
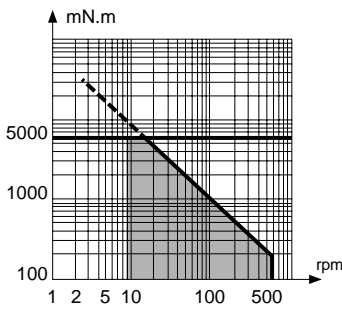


80 805 0	80 805 0	80 805 0	80 835 0	80 835 0	80 835 0
12 V	24 V	48 V	12 V	24 V	48 V
2600	2600	2600	1800	1800	1800

•	•	•	•	•	•
•	•	•	80 835 012	80 835 009	•
•	•	•	•	•	•
•	•	•	80 835 013	80 835 004	•
•	•	•	•	•	•
•	•	•	80 835 014	80 835 002	•
•	•	•	80 835 015	80 835 003	•
•	•	•	•	•	•
•	•	•	80 835 016	80 835 008	•
•	•	•	80 835 017	80 835 006	•
•	•	•	80 835 018	80 835 005	•

82 800 0	82 800 0	82 800 0	82 830 0	82 830 0	82 830 0
81 035 0	81 035 0	81 035 0	81 035 0	81 035 0	81 035 0
5	5	5	5	5	5
6	6	6	6	6	6
6	6	6	6	6	6
16.3	17	16.7	33	33	33
15.7	15.6	15	27	27	27
44	40	45	50	50	50
920	920	920	1540	1540	1540

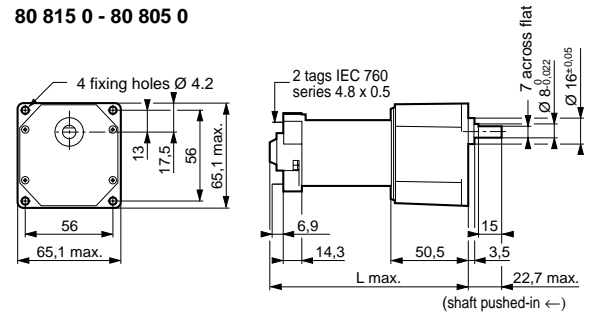
•	•	•	•	•	•
•	•	•	•	•	•



- 1
- 2
- 3
- 4

**Dimensions**

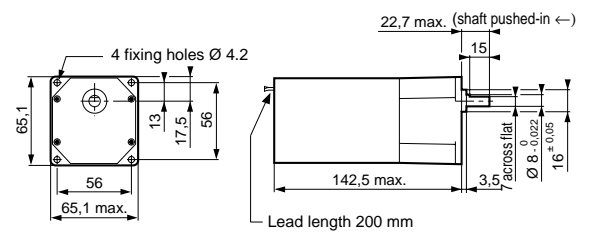
**80 815 0 - 80 805 0**



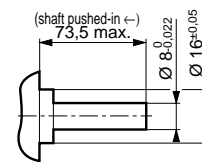
Types	L max (mm)
80 815 0	113.5
80 805 0	128.5

- 5

**80 835 0**



**Non stocked product : gearbox shaft 79 290 064**



**To order, specify :**

Standard products **4** Part number  
 Example : D. C. geared motor - 80 835 012

Standard products, non stocked **1** Type **2** Nominal voltage **3** Output speed **4** Standard speed **5** Option  
 Example : D. C. geared motor 80 815 0 - 12 V - 2600 rpm - 170 rpm - output shaft 79 290 064